



Balmedie School Recovery Plan

Appendix C

School Mapping Exemplars

33% Recovery Plan

BALMEDIE PRIMARY SCHOOL

School Proposals

Transport, Pick Ups and Drops Offs

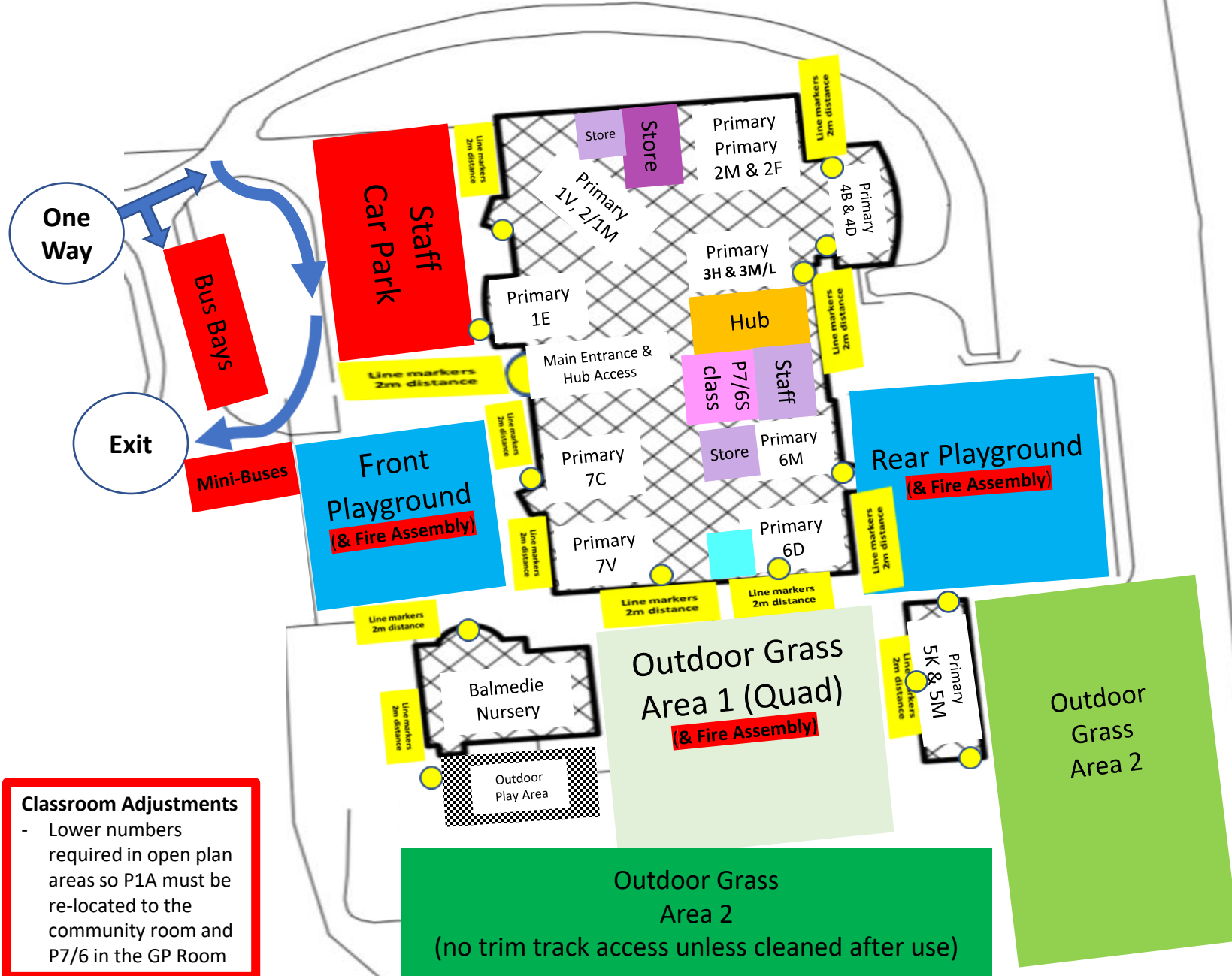
- Maintain 1 way transport system and drop off points
- Staggered drop off (9am, 9.10am & 9.20am by timetable/rota)
- Staggered pick up (2.40, 2.50pm and 3pm by timetable/rota)

Safety Lines and Markings

- Very limited access or marked spaces/areas for Nursery/P1 parents into playground
- No access to other parents or visitors
- Line up markers for all class entrances and exits (2m distanced)
- New fire drill assembly points/lines with social distancing spray painted in all playgrounds

Nursery

- Full cleaning required between sessions (shorter timings)



Classroom Adjustments

- Lower numbers required in open plan areas so P1A must be re-located to the community room and P7/6 in the GP Room

School Proposals

Infection Control

- Full signage and hand sanitiser points at every entrance and exit point/door
- Isolation space designated areas and guidance in all settings for any child symptoms (isolated & collect)
- Toilet access (floor markings & signage), 1 person at a time
- Daily checks on handwash routines, signage & resources
- Cleaning rotas and risk assessment in use
- Packed lunches delivered to all classrooms
- Surface wipes available for each classroom (significantly reduced furniture/resources)
- Class group sizes between 6-11 children
- Each child with own tray/space for belongings
- Staggered breaktimes and lunch times to designated areas (rota PSA supervision in all areas)
- Cloakrooms are only walkways/no changing areas

50% Recovery Plan

BALMEDIE PRIMARY SCHOOL

School Proposals

Transport, Pick Ups and Drops Offs

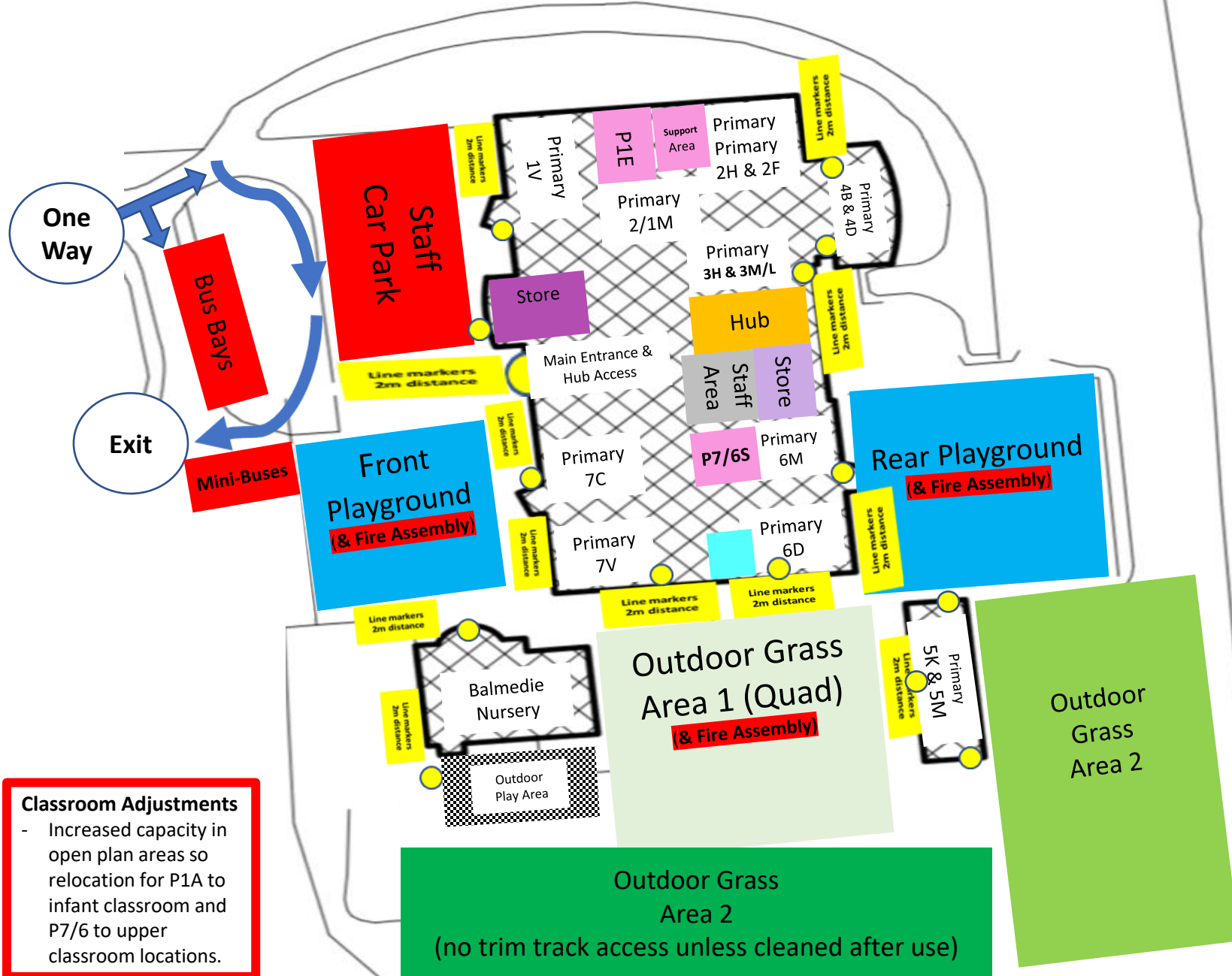
- Maintain 1 way transport system and drop off points
- Staggered drop off (9am, 9.10am & 9.20am by timetable/rota)
- Staggered pick up (2.40, 2.50pm and 3pm by timetable/rota)

Safety Lines and Markings

- Very limited access or marked spaces/areas for Nursery/P1 parents into playground
- No access to other parents or visitors
- Line up markers for all class entrances and exits (1.5>1m distanced)
- New fire drill assembly points/lines with social distancing spray painted in all playgrounds

Nursery

- Full cleaning required between sessions (shorter timings)



Classroom Adjustments

- Increased capacity in open plan areas so relocation for P1A to infant classroom and P7/6 to upper classroom locations.

School Proposals

Infection Control

- Full signage and hand sanitiser points at every entrance and exit point/door
- Isolation space designated areas and guidance in all settings for any child symptoms (isolated & collect)
- Toilet access (floor markings & signage), 1 person at a time
- Daily checks on handwash routines, signage & resources
- Cleaning rotas and risk assessment in use
- Packed lunches delivered to all classrooms
- Surface wipes available for each classroom (significantly reduced furniture/resources)
- Class group sizes between 6-11 children
- Each child with own tray/space for belongings
- Staggered breaktimes and lunch times to designated areas (rota PSA supervision in all areas)
- Cloakrooms are only walkways/no changing areas

33% Recovery Plan

P1E – Toilet 50

P1V – Toilet 22/21

P2/1M – Toilet 22/21

P2F – Toilet 38, 23/24

P2M – Toilet 23/24

P3M/L – Toilet 23/24

P3H – Toilet 23/24

P4B – Toilet 23/24

P4D – Toilet 23/24

P5M – Toilet 95 portacabin

P5K – Toilet 95 portacabin

P6M – Toilet 35/36

P6D – Toilet 35/36

P7/6S – Toilet 47

P7C – Toilet 41/40

P7V – Toilet 41/40

Hub 1 – Toilet 47

Staff (M) – Toilet 64

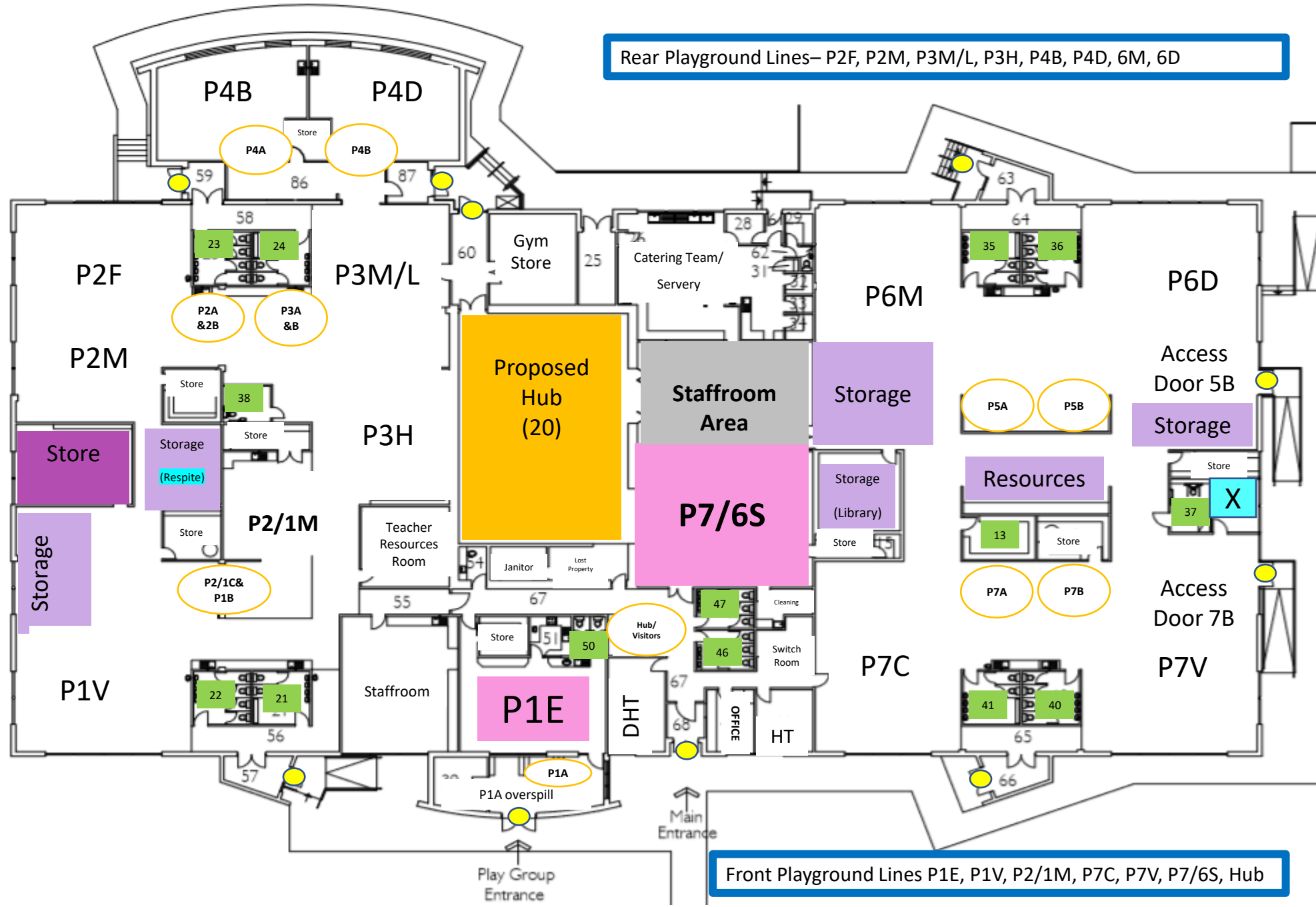
Staff (F) – Toilet 46 & 13

Isolation Space (symptoms) X

Entrance/Exit ●

Hand Sanitiser Set Up CLASS

Class/group lines & Fire Assembly Points Class Lines



Rear Playground Lines– P2F, P2M, P3M/L, P3H, P4B, P4D, 6M, 6D

Front Playground Lines P1E, P1V, P2/1M, P7C, P7V, P7/6S, Hub

50% Recovery Plan

P1E – Toilet 22/21
 P1V – Toilet 22/21
 P2/1M – Toilet 22/21

P2F – Toilet 38, 23/24
 P2M – Toilet 23/24

P3M/L – Toilet 23/24
 P3H – Toilet 23/24

P4B – Toilet 23/24
 P4D – Toilet 23/24

P5M – Toilet 95 portacabin
 P5K – Toilet 95 portacabin

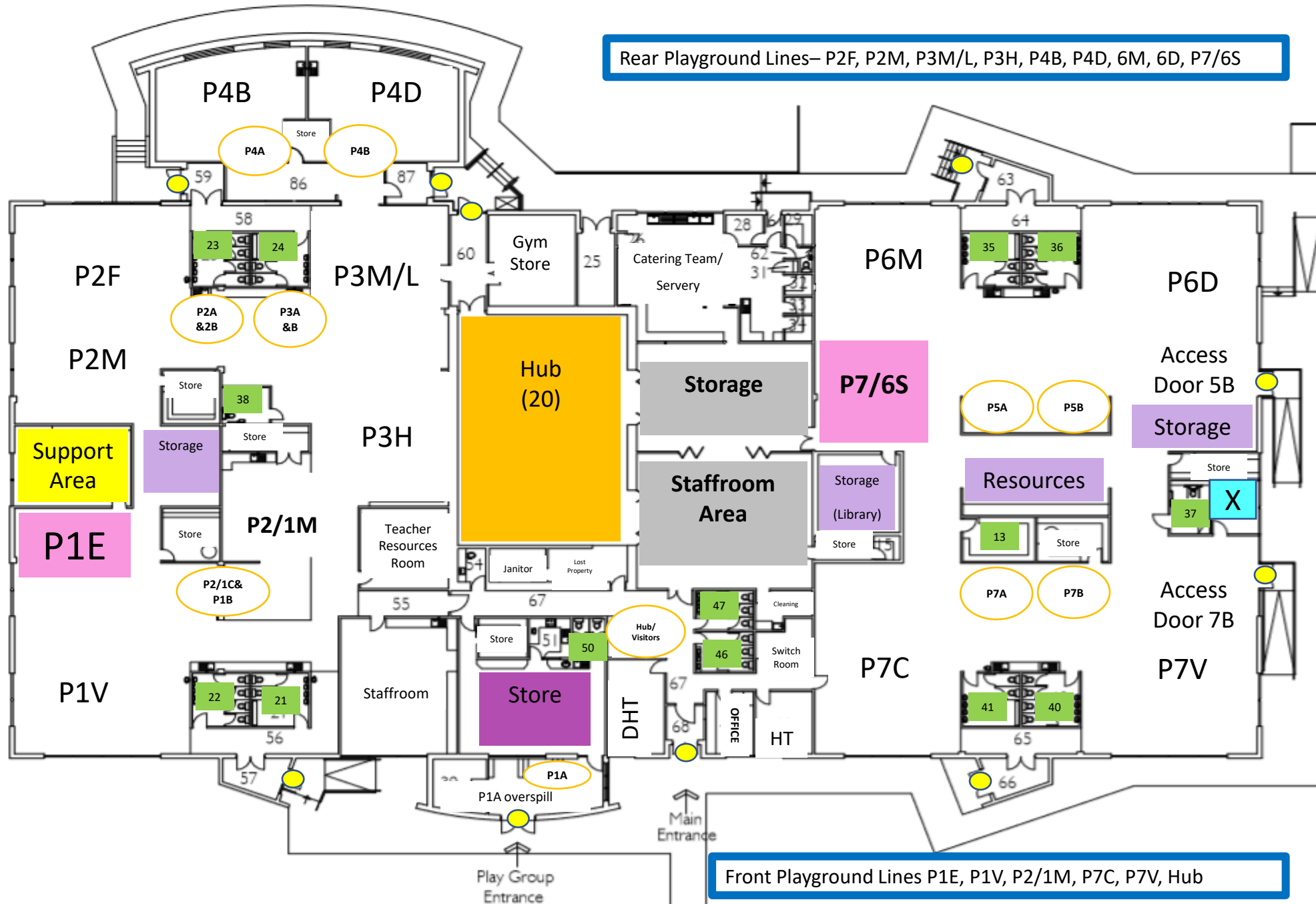
P6M – Toilet 35/36
 P6D – Toilet 35/36
 P7/6S – Toilet 41/40, 35/36
 P7C – Toilet 41/40
 P7V – Toilet 41/40

Hub 1 – Toilet 47
 Staff (M) – Toilet 64
 Staff (F) – Toilet 46 & 13

Isolation Space (symptoms) X

Entrance/Exit ●
 Hand Sanitiser Set Up CLASS

Class/group lines & Fire Assembly Points Class Lines



Rear Playground Lines– P2F, P2M, P3M/L, P3H, P4B, P4D, 6M, 6D, P7/6S

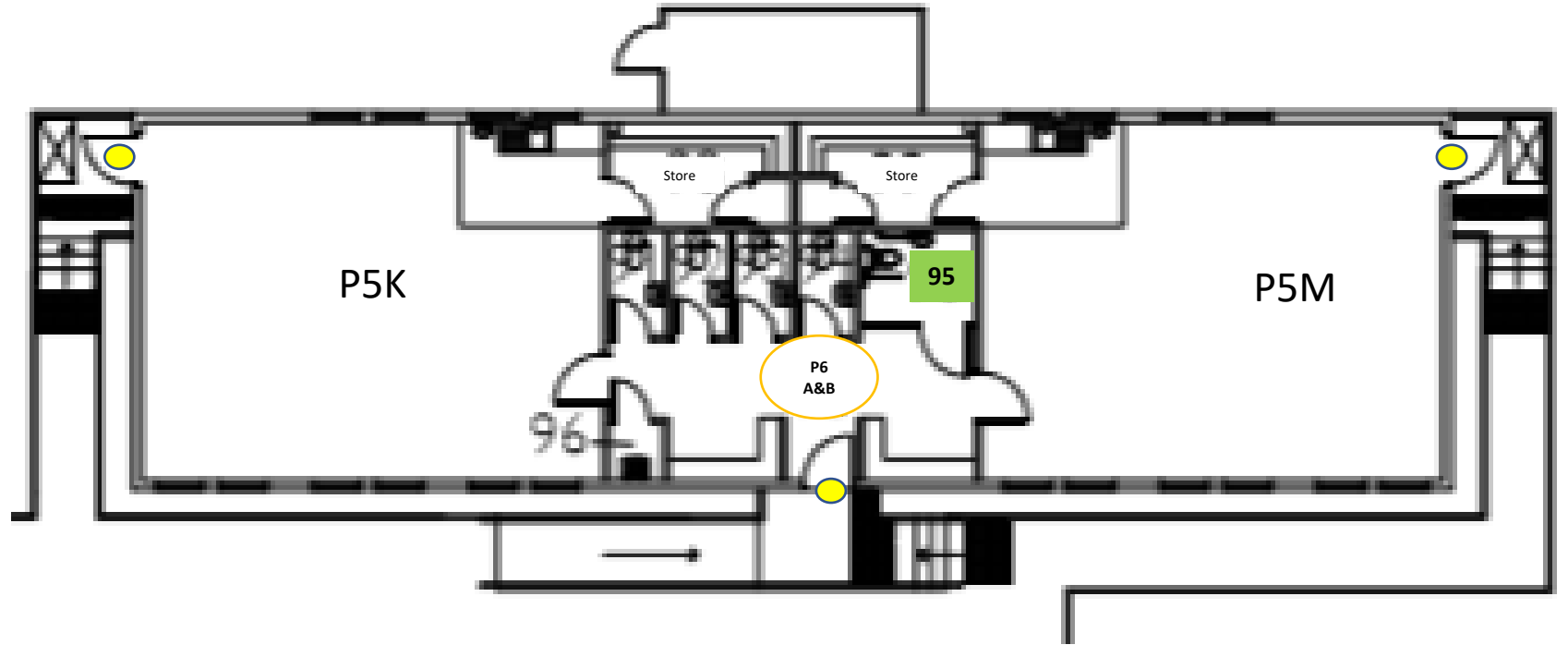
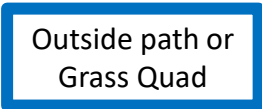
Front Playground Lines P1E, P1V, P2/1M, P7C, P7V, Hub

Recovery Plan 33% & 50%

P5K – 95
P5M – 95

Entrance/Exit ●
Hand Sanitiser Set Up ○

Class/group lines &
Fire Assembly Points



Recovery Plan 33% and 50%

Nursery – 75 & 76

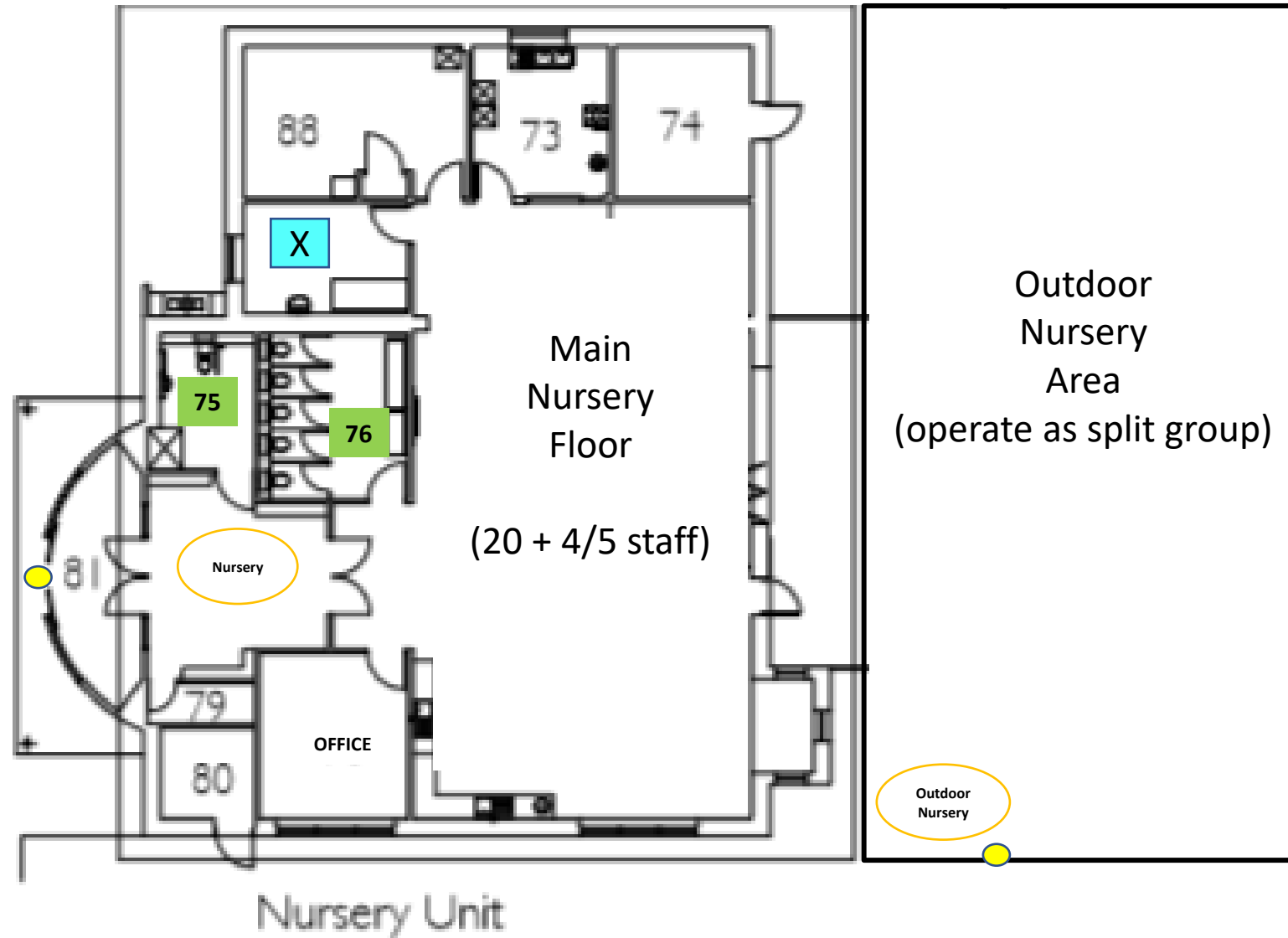
Respite, symptom, isolation area X

Entrance/Exit ●

Hand Sanitiser Set Up



Nursery/group lines



RECOVERY PLAN FIRE EXIT
ASSEMBLY POINT
AND SAFE ROUTES
33% and 50%

Fire Exits/Exit Points ▲

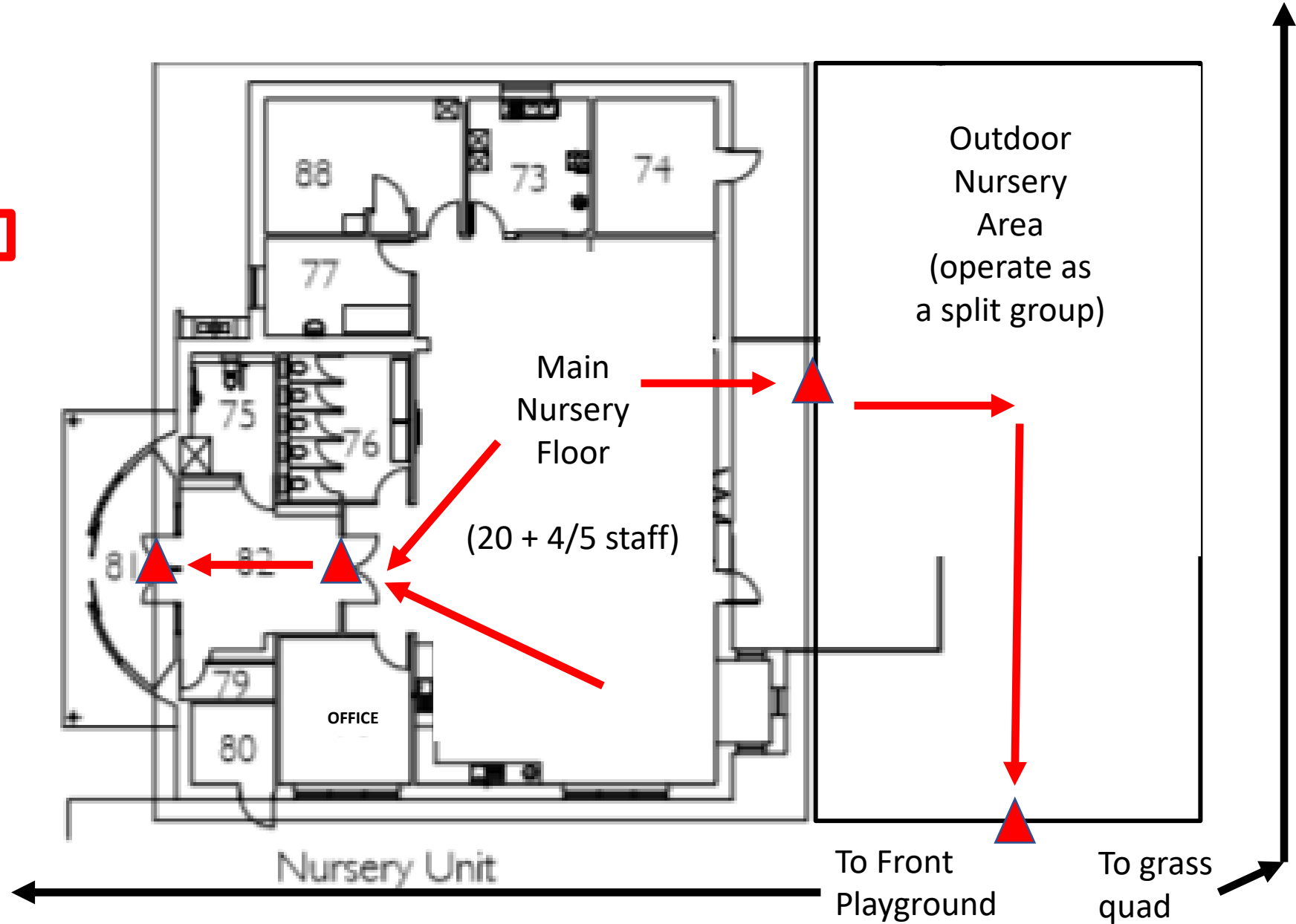
Class/group lines &
Fire Assembly Points
(front or rear playground)

AREA

Nearest fire exit route
follow →

Fire Assembly Point
BALMEDIE NURSERY
Front Playground
or Grass Quad

Group exit size = 10/26
Class exit size = 52



**RECOVERY PLAN FIRE EXIT
ASSEMBLY POINT
AND SAFE ROUTES
33% Model**

**Fire Assembly Point - Rear Playground
P2F, P2M, P3M/L, P3H, P4B, P4D, 6M, 6D**

Fire Exits/Exit Points ▲

Class/group lines &
Fire Assembly Points
(front or rear playground)

AREA

Nearest fire exit route
follow →

P1 Group exit size = 7-11
P1 Class exit size = 22

P2/1 Group exit size = 7-8
P2/1 Class Exit Size = up to 25

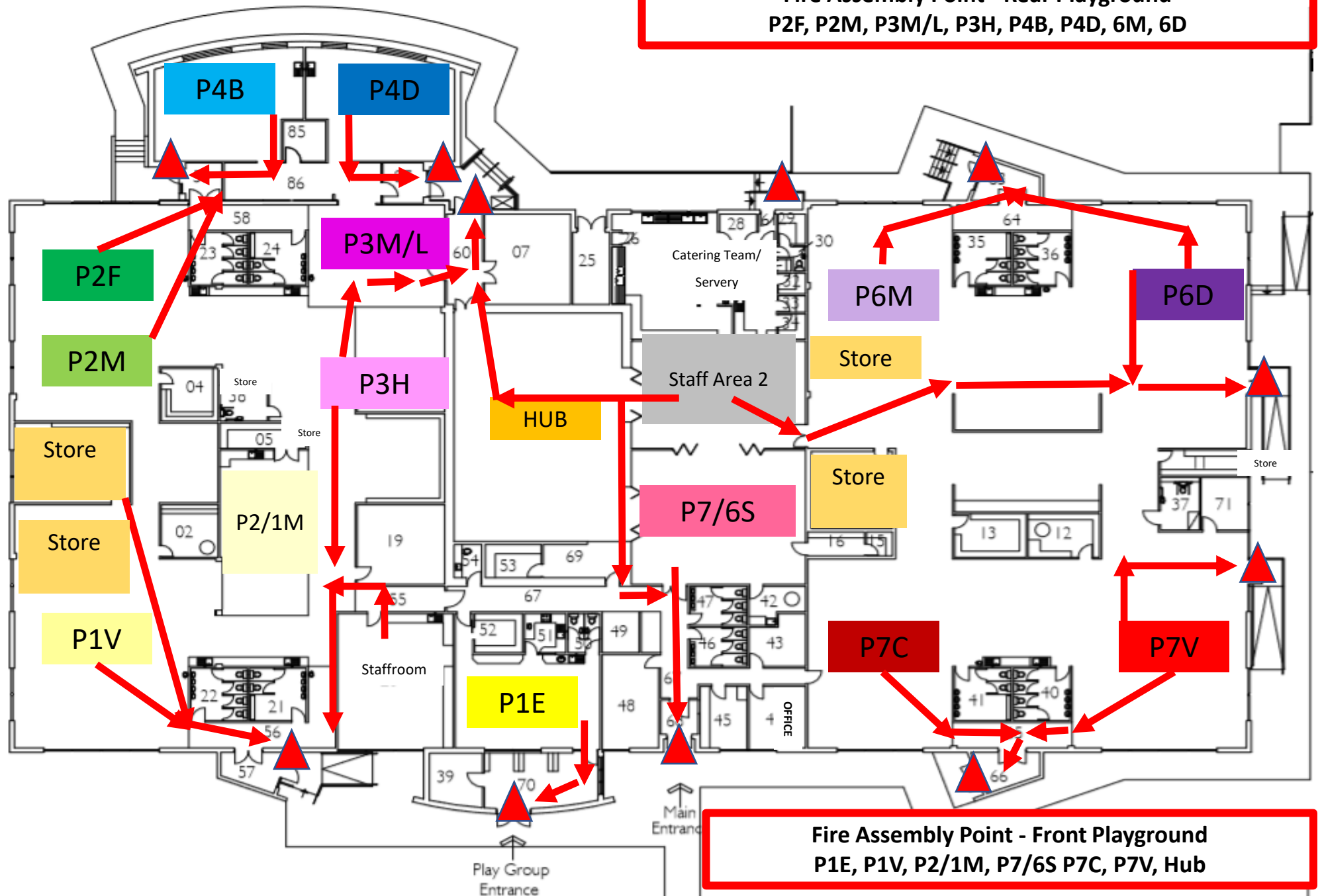
P2 Group Exit Size = 8-9
P2 Class Exit Size = up to 28

P3 Group Exit Size = 7-9
P3 Class Exit Size = up to 30

P4 Group Exit Size = 9-10
P4 Class Exit Size = up to 30

P6 & 7 Group Exit Size = 8-11
P6 & 7 Class Exit Size = up to 33

Hub 1 Exit Group Size = 7
Hub 1 Exit Class Size = up to 30



**Fire Assembly Point - Front Playground
P1E, P1V, P2/1M, P7/6S P7C, P7V, Hub**

**RECOVERY PLAN FIRE EXIT
ASSEMBLY POINT
AND SAFE ROUTES
50% Model**

**Fire Assembly Point - Rear Playground
P2F, P2M, P3M/L, P3H, P4B, P4D, 6M, 6D, P7/6S**

Fire Exits/Exit Points ▲

Class/group lines &
Fire Assembly Points
(front or rear playground)

AREA

Nearest fire exit route
follow →

P1 Group exit size = up to 11
P1 Class exit size = 22

P2/1 Group exit size = up to 13
P2/1 Class Exit Size = up to 25

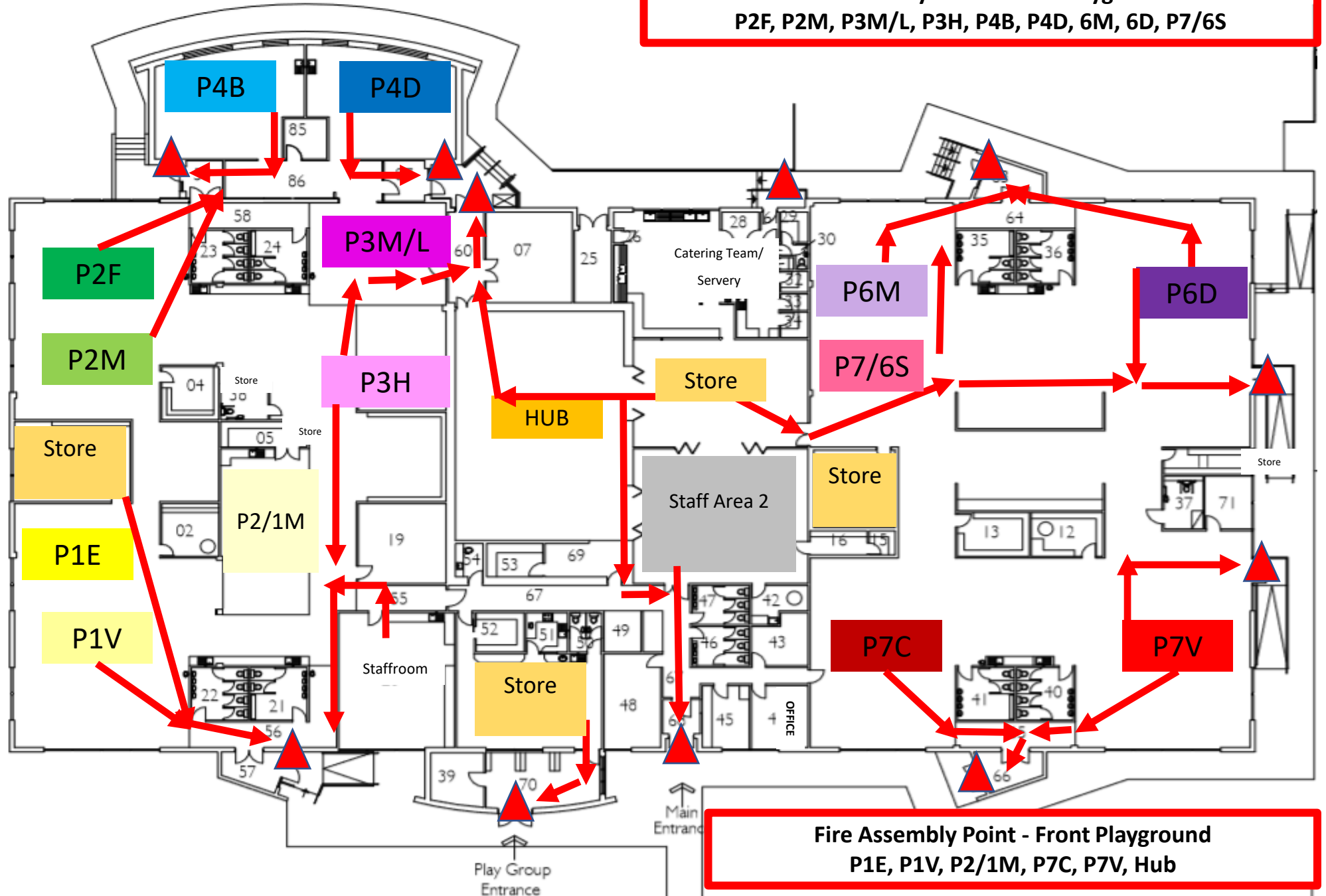
P2 Group Exit Size = up to 15
P2 Class Exit Size = up to 28

P3 Group Exit Size = up to 16
P3 Class Exit Size = up to 32

P4 Group Exit Size = up to 16
P4 Class Exit Size = up to 32

P6 & 7 Group Exit Size = up to 17
P6 & 7 Class Exit Size = up to 33

Hub 1 Exit Group Size = up to 15
Hub 1 Exit Class Size = up to 30



**Fire Assembly Point - Front Playground
P1E, P1V, P2/1M, P7C, P7V, Hub**

**FIRE EXIT
ASSEMBLY POINT
AND SAFE ROUTES
33% and 50%**

Fire Exits/Exit Points ▲

Class/group lines &
Fire Assembly Points
(front or rear playground)

AREA

Nearest fire exit route
follow →

**Fire Assembly Point:
PRIMARY 5K & 5M**

Front Playground or
Grass Quad

Group exit size = 10/17
Class exit size = 33

To front
playground

